

Random Carbide Abrasive

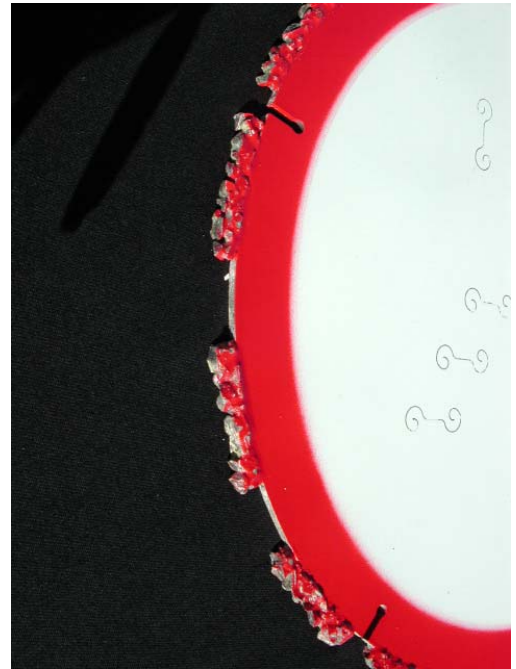


Demolition, Fire, Rescue & Roofing

Material Application: Tree Roots, Nail Imbedded Wood, Tar and Gravel Roofing, Car Bodies, Fire Doors, Car Tires, Fiberglass, Plastics, Ice.

Contractor Markets: Demolition Contractors, Fire Departments, Emergency Rescue Teams, Roofing Contractors, Landscapers.

Equipment:



Sizes & Part Numbers:

12" x .250" x 1" Part # 80000	12" x .250" x 20mm Part # 81000	14" x .250" x 1" Part # 85000	14" x .250" x 20mm Part # 86000
----------------------------------	------------------------------------	----------------------------------	------------------------------------

Product Positioning:

Aggressive cutting of difficult materials where diamond or abrasive blades are inefficient.

Important Notes:

This blade has a single row of permanently imbedded carbide chunks. Sharp jagged leading edges do the cutting. When these edges become rounded and dull, the blade is reversed, exposing new leading edges. When these edges become dull the blade is fully consumed. Using this blade to cut hard substrate materials will cause the blade to dull rapidly and could result in the cracking of the steel core. Always check the blade for damage before use and comply with ANSI Code B7.1, B7.5 and all OSHA regulations.

Make the
StarChoice™



CALL 1-800-282-6470
FAX 1-800-282-6466
www.stardiamondtools.com