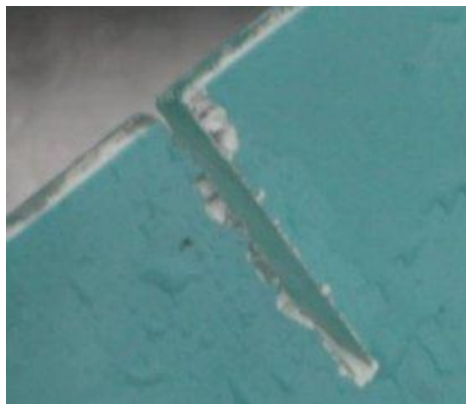


Glass Tile Blades

Cutting Glass tile is easy...if you use the correct blade.



Cutting with the Wrong Blade



Perfect Cuts on Glass Tile

A Glass Tile Blade is a continuous rim blade like a porcelain or ceramic tile blade, but has a softer matrix, smaller diamonds and is thinner, to provide a chip free cut on the hard and brittle glass tile. A WET saw must be used.

To prepare for the cut, place masking tape on the textured side of the tile and draw your cut line on the masking tape. Place the tile with the smooth side DOWN. This way the tile will slide smoothly on the tile saw bed.

Make sure you use water, and cut slow and steady all the way through the cut.

Part#	Size
STA-13002	4" x .020" x 5/8"
STA-13003	7" x .063" x 5/8"
STA-13004	8" x .050" x 5/8"
STA-13001	10" x .065" x 5/8"